



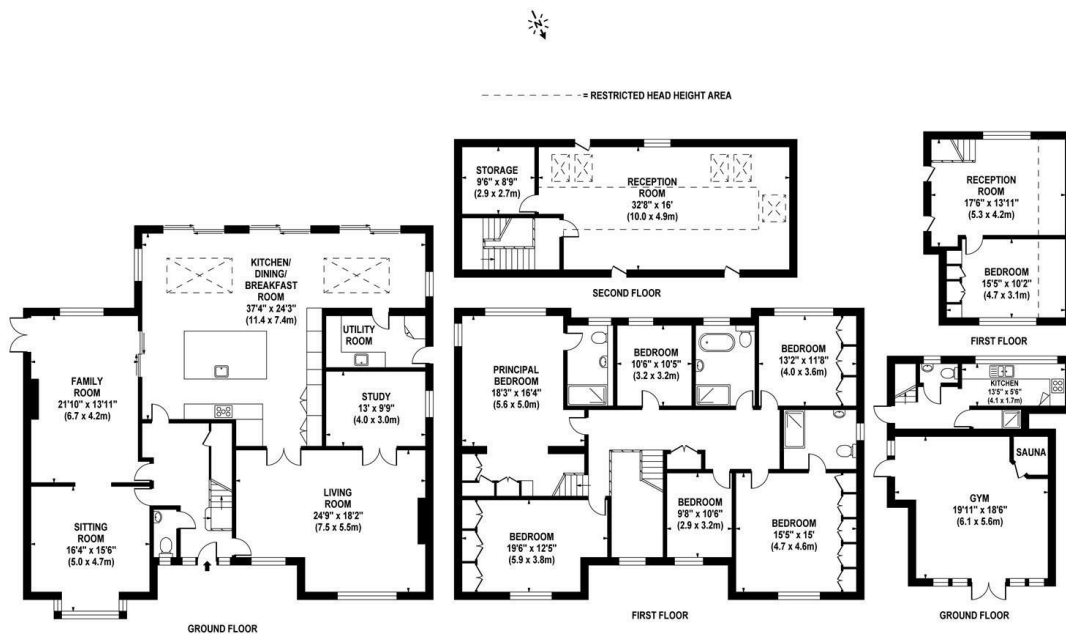
Howard Morley
& Sons

PER MONTH

£9,850 Per Month

Waterhouse Lane

Tadworth, KT20 6HU



APPROX. GROSS INTERNAL FLOOR AREA 4594 SQ FT / 427 SQ M (MAIN HOUSE)
 APPROX. GROSS INTERNAL FLOOR AREA 918 SQ FT / 85 SQ M (OUTBUILDING)
 APPROX. GROSS INTERNAL FLOOR AREA 5512 SQ FT / 512 SQ M (TOTAL) (INCLUDING RESTRICTED HEAD HEIGHT AREA)

These plans are for representation only and should not be used for any legal or contractual purposes. These plans are for representation only and should not be used for any legal or contractual purposes. These plans are for representation only and should not be used for any legal or contractual purposes. These plans are for representation only and should not be used for any legal or contractual purposes.

7

4

6

Energy Efficiency Rating		Current	Potential
<i>Very energy efficient - lower running costs</i>			
(92 plus) A			
(81-91) B			
(69-80) C			79
(55-68) D		66	
(39-54) E			
(21-38) F			
(1-20) G			
<i>Not energy efficient - higher running costs</i>			
England & Wales		EU Directive 2002/91/EC	

Agents Note: Whilst every care has been taken to prepare these particulars, they are for guidance purposes only. All measurements are approximate and are for general guidance purposes only and whilst every care has been taken to ensure their accuracy, they should not be relied upon and potential buyers/tenants are advised to recheck the measurements

Howard Morley & Sons

OFFICE ADDRESS
 276 High Street
 Guildford
 Surrey
 GU1 3JL

OFFICE DETAILS
 01483 575 304
 lettings@hmorley.co.uk
 hmorley.co.uk